

## MINI-LADDER WALL SYSTEM



**Call now for pricing and availability!**  
**813.962.8890**



**SBA WOSB**  
Woman Owned Small Business



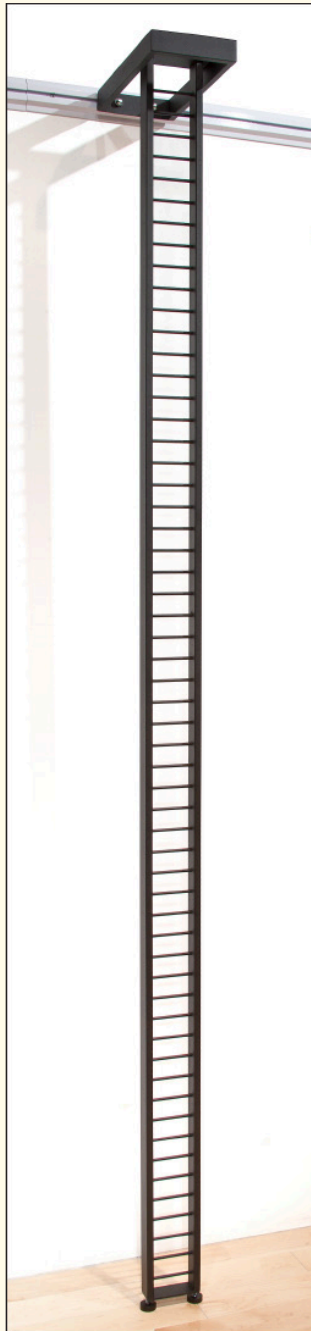
**WOMEN  
OWNED**

P.O. Box 271893, Tampa, FL 33688  
email: [info@SLfixtures.com](mailto:info@SLfixtures.com)  
813.962.8890 • fax: 813.962.8891  
cell: 813-765-6640  
[www.SandraLeppert.com](http://www.SandraLeppert.com)



## MINI-LADDER COMPONENTS

Our Mini-Ladder rungs are designed to receive any wire grid accessory.  
The system is available in chrome & matte black finish.



### Mini-Ladder Post

87.5"H including levelers.

Ladder rungs are .25" dia. 3" W on 1.5" centers. Uprights are .5" x 1.5" rectangular tubing in Matte Black Finish or Chrome



### Wall Channel


8" long white aluminum channel may be painted to match wall color. Due to various mounting techniques in different wall materials, we do not include holes or screws for mounting.



### Anchor Bracket

12"D x 6"W bracket easily mounts into Wall Channel with included hardware. Bracket can be placed anywhere along the channel.

**Floor Standing Costumers**



Go with faceouts & waterfalls to create a costumer or use two towers together with assorted accessories to create an impressive free-standing merchandising unit.

Heavy 12" x 15" weighted base. Uses any grid accessories, sold separately. Matte Black finish.

72" Upright  
54" Upright

*Combine the Adjustable Wall System with our Floor Standing Consumers to crete a functional and attractive retail store layout.*





# INTERIOR & EXTERIOR SHELVES



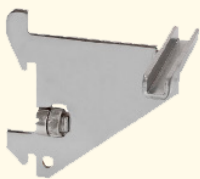
## Interior Shelves - Off the Wall

The flexibility of the Mini-Ladder System allows the store merchandiser to easily change the appearance of any dept. by re-configuring the location of the vertical posts - by adding shelves or hangrails and by varying the distance between posts.



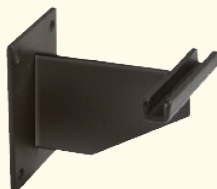
## Exterior Shelves - On the Wall

are also great when retail space has existing heavyweight slotted standards. Ladder posts can be mounted to standards with 1" slots on 2" centers using the Mini-Ladder bracket for Standards. You can also mount the ladder posts directly to the wall using two wall brackets.



### Mini-Ladder Bracket

Heavy duty slatted standards.  
Fits 1" slots on 2" centers.  
Chrome Finish



### Mini-Ladder Wall Bracket

Matte Black Finish



### Shelf Bracket

14" L  
Matte Black Finish



### Perforated Metal Shelves

go between Mini-Ladder Posts that are 48" apart on center. The perforated metal prevents the accumulation of dust. Designed to be used with Interior Shelf Brackets. Matte Black finish.



### Interior Shelf Brackets

must be used in pairs. Unique design fits Mini-Ladder Posts on either left or right sides. Set screws lock them in place. Matte Black finish.



### Perforated Metal Shelves

are strong and prevent the accumulation of dust. Decorative bullnose front Matte Black finish. Designed to be used with 14" gridwall bracket.

Large Shelf: 50"L x 15"D Small Shelf: 23"L x 15"D



**SBA WOSB**  
Woman Owned Small Business



**WOMEN OWNED**

P.O. Box 271893, Tampa, FL 33688  
email: [info@SLfixtures.com](mailto:info@SLfixtures.com)  
813.962.8890 • fax: 813.962.8891  
cell: 813-765-6640  
[www.SandraLeppert.com](http://www.SandraLeppert.com)



## GRID ACCESSORIES



**12" Rectangular Tubing  
Faceout with Tab End**  
Matte Black or Chrome Finish



**12" Round Tubing  
Faceout with Disk End**  
Matte Black or Chrome Finish



**12" Square Tubing  
Faceout with Ball End**  
Matte Black or Chrome Finish



**Grid Hooks**  
Matte Black or Chrome Finish  
Available in 4", 6", 8", 10" or 12"



**7-Ball Waterfill**  
Matte Black or Chrome Finish



**5-Hook  
Waterfall**  
Matte Black  
or Chrome Finish



**22" Wide  
U-Shaped Hangrail**  
Matte Black or Chrome Finish with  
1/4" protective wire



**48" Long  
Straight Hangrail**  
Matte Black or Chrome Finish with  
1/4" protective wire



**32" Long Quarer  
Circle Hangrail**  
Matte Black or Chrome Finish with 1/4"  
protective wire



**Hangrail Brackets**  
Matte Black Finish  
Available in 4", 8" or 12" Long



**Rectangular Tubing**  
Matte Black or Chrome Finish  
with protective chrome strip  
Available in 24" or 48" Long



**End Cap or Extended End Cap**  
Matte Black or Chrome Finish

